



Radon Monitoring Systems

www.southernscientific.co.uk



Southern
Scientific

EXPERIENCE & EXPERTISE

AlphaGUARD	3
Soil Gas Probe	3
Alpha PM	3
AquaKIT	5
AlphaE	5
DataVIEW	5
Pylon AB7	6
Radon Calibration Service	7



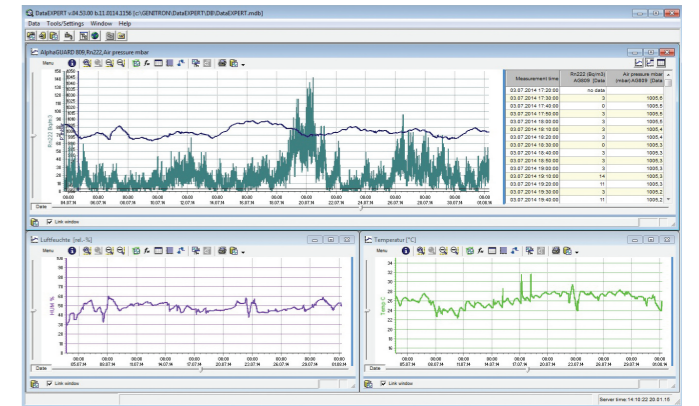
AlphaGUARD

AlphaGUARD is a portable, battery- or net-operated high storage capacity radon monitor which offers high detection efficiency in radon monitoring, a wide measurement range fast response and permanent, maintenance-free operation with long-term stable calibration.

In addition to the radon concentration, AlphaGUARD simultaneously measures and records ambient temperature, relative humidity and atmospheric pressure with embedded sensors.

Optimal ergonomics, high responsiveness and a large digital display make AlphaGUARD a reference device to perform measurement and analysis everywhere from a lab to the field.

- High sensitivity and fast linear response at 2 to 2,000,000 Bq/m³, 5 cpm to 100 Bq/m³, 0.05 to 54,000 pCi/l, 5 cpm at 3 pCi/l.
- Multi-parameter features.
- Long term stable calibration.
- Maintenance-free operation.
- DATAVIEW pro software for data download and measurement set up.



Soil Gas Probe

The soil gas probe is perfect for sampling and continuous monitoring of radon. Suitable for manual as well as for machine driven propulsion, the exchangeable drilling tip and the aqua-stop filter ensure easy and safe sampling.

- Screening measurement (sampling).
- Easy to use.
- Cost effective.

AlphaPM

The AlphaPM radon progeny meter is an active monitor with high sensitivity which measures time-resolved airborne radon progeny concentration.

The device is designed to be connected to the AlphaGUARD radon monitor for measuring the radon progeny concentration in parallel to the radon gas.

- High sensitivity 130 pulses/h at 1 Bq/m³ EEC (0.03 MeV/cm³)
- Quasi-continuous sampling in 10 min. intervals.
- Sensitive semiconductor (PIPS).
- Optimised for easy accurate performance.
- Data stored in connection with AlphaGUARD PQ2000 Pro.





AquaKIT

AquaKIT is an optional accessory to the radon monitoring systems AlphaGUARD PQ2000 PRO.

In combination with the radon monitor and an electric pumping unit (AlphaPUMP or LabPUMP) the AquaKIT allows the radon concentration in water samples to be determined directly and precisely.

- Portable for laboratory and field measurement.
- Heat resistant active coal filter cartridge for minimising the radon background prior to precision measurements.
- Comprehensive range of accessories.



AlphaE

The AlphaE is a lightweight, versatile continuous radon monitor for fast time-resolved radon monitoring in buildings, outdoors, as well as in mines. The ultra-small monitor provides fast and accurate time-resolved measurements of radon concentration.

Cost-effective radon measurement, with the ability to measure low radon levels, below 100 Bq/m³, the AlphaE can also be used to measure personal radon exposure and radon dose.

- Time resolved measurement for the exact determination of radon.
- Measurement from 20 Bq/m³ to 10 MBq/m³ (0.54 pCi/l to 270 nCi/l).
- Up to 6 months battery life.
- Acoustic alert for radon concentration and dose.
- Lightweight.

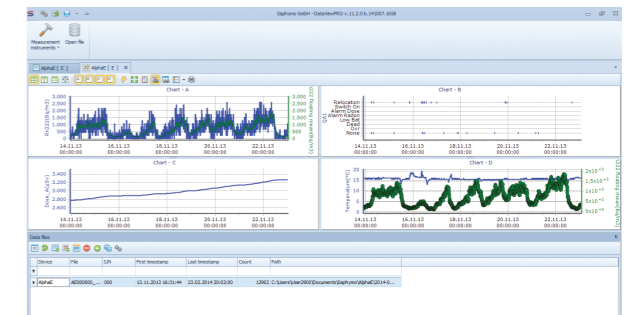


DataVIEW

DataVIEW is a user-friendly PC software for retrieving data from measurement devices as well as for analysing and visualising. DataVIEW PRO includes besides other sophisticated features a report module which allows free selection of weekdays and/or different times of day.

DataVIEW can directly communicate with the AlphaGUARD radon monitor and AlphaE radon monitor for parameterisation and data readout. The connection is established via IR or USB depending on the interface provided by a particular device.

- Designed for an easy set up of the AlphaE and AlphaGUARD, data download and professional data comparison.
- Display of value tables and charts.
- Direct export to Excel.
- Generates customised reports.



Measurement time	Conc. (Bq/m³)	Temp. (°C)	Humidity (%)	Pressure (hPa)	Radon (Bq/m³)	Radon (pCi/l)	Radon (mBq/l)	Radon (mCi/l)	Radon (mBq/l)	Radon (mCi/l)	Radon (mBq/l)	Radon (mCi/l)	Radon (mBq/l)	Radon (mCi/l)	Radon (mBq/l)	Radon (mCi/l)	Radon (mBq/l)	Radon (mCi/l)		
14.11.2012 09:00:00	850	22.50	65.00	1013.00	850	22.80	2.78	0.20	850	22.80	2.78	0.20	850	22.80	2.78	0.20	850	22.80	2.78	0.20
14.11.2012 09:05:00	850	22.50	65.00	1013.00	850	22.80	2.78	0.20	850	22.80	2.78	0.20	850	22.80	2.78	0.20	850	22.80	2.78	0.20
14.11.2012 09:10:00	850	22.50	65.00	1013.00	850	22.80	2.78	0.20	850	22.80	2.78	0.20	850	22.80	2.78	0.20	850	22.80	2.78	0.20
14.11.2012 09:15:00	850	22.50	65.00	1013.00	850	22.80	2.78	0.20	850	22.80	2.78	0.20	850	22.80	2.78	0.20	850	22.80	2.78	0.20
14.11.2012 09:20:00	850	22.50	65.00	1013.00	850	22.80	2.78	0.20	850	22.80	2.78	0.20	850	22.80	2.78	0.20	850	22.80	2.78	0.20
14.11.2012 09:25:00	850	22.50	65.00	1013.00	850	22.80	2.78	0.20	850	22.80	2.78	0.20	850	22.80	2.78	0.20	850	22.80	2.78	0.20
14.11.2012 09:30:00	850	22.50	65.00	1013.00	850	22.80	2.78	0.20	850	22.80	2.78	0.20	850	22.80	2.78	0.20	850	22.80	2.78	0.20
14.11.2012 09:35:00	850	22.50	65.00	1013.00	850	22.80	2.78	0.20	850	22.80	2.78	0.20	850	22.80	2.78	0.20	850	22.80	2.78	0.20
14.11.2012 09:40:00	850	22.50	65.00	1013.00	850	22.80	2.78	0.20	850	22.80	2.78	0.20	850	22.80	2.78	0.20	850	22.80	2.78	0.20
14.11.2012 09:45:00	850	22.50	65.00	1013.00	850	22.80	2.78	0.20	850	22.80	2.78	0.20	850	22.80	2.78	0.20	850	22.80	2.78	0.20
14.11.2012 09:50:00	850	22.50	65.00	1013.00	850	22.80	2.78	0.20	850	22.80	2.78	0.20	850	22.80	2.78	0.20	850	22.80	2.78	0.20
14.11.2012 09:55:00	850	22.50	65.00	1013.00	850	22.80	2.78	0.20	850	22.80	2.78	0.20	850	22.80	2.78	0.20	850	22.80	2.78	0.20
14.11.2012 10:00:00	850	22.50	65.00	1013.00	850	22.80	2.78	0.20	850	22.80	2.78	0.20	850	22.80	2.78	0.20	850	22.80	2.78	0.20

Radon Monitoring Systems

Pylon AB7

The Pylon AB7 Portable Radiation Monitor is a next generation laboratory-grade instrument for fast, accurate measurement of radon levels.

Every bit as reliable as Pylon's previous monitors, it incorporates advanced technology and user-friendly features for enhanced performance and versatility.

Backed by over 30 years of radon and thoron detection and measurement expertise, superior engineering, and worldclass customer service, the Pylon AB7 provides radon detection you can depend on.

- **Field Readiness** – Compact, lightweight unit with rechargeable battery and built in photomultiplier tube (PMT).
- **Modular Versatility** – Multiple detectors interface with internal PMT enabling a variety of measurements.
- **LCD Touch Screen** – Intuitive, efficient user interface offers increased visibility and data entry options.
- **Networking** – WiFi and Ethernet connectivity.
- **USB/Pulse Interfaces** – Host and client USB interfaces for fast, efficient data transfers and pulse output.
- **Customisable Solution** – Adjustable PMT high voltage and discriminator settings, pre-programmed methods and optional internal pump.
- **Automated Calculations** – For some measurements, eliminates need for manual calculations from raw data.
- **User Calibration** – Simplified programming and operation saves time and expense of factory calibrations.
- **Safety and Reliability** – Compact, rugged sampling cells ideal for environments that require safe equipment operation.



Radon Calibration Service

It is a requirement for Radon monitors to be calibrated to ensure the readings are within correct limits. Radon monitors can accumulate Pb-210 contamination due to the decay of radon. As a result, annual inspections are vital to confirm that the results remain reliable, and the device remains functional. As the largest source of background radiation, and the second leading cause of lung cancer in the UK, it is critical that businesses have the tools and knowledge to properly monitor radon. Accurate monitoring is vital for assessing health risks in homes and buildings, and compliance is legally required for all employers under the Health and Safety at Work Act 1974 and the Management of Health and Safety at Work Regulations 1999 for high radon areas.

Southern Scientific's calibration service for radon monitors offers calibration directly through our Nuclear Services Department at our head office in Henfield, using certified and rigorous radon testing standards that are traceable to the Bundesamt für Strahlenschutz (BfS) in Germany.

We partner with leading manufacturers to offer a tailored service, which can include adjusting instruments to meet specification, rather than simply offering a calibration factor.

All tests are conducted in a carefully controlled environmental radon chamber to ensure precision, and limiting the influence of external ambient conditions. The chamber allows radon levels to be reduced down to near zero and up to high levels for increased calibration ranges.

Our service reflects our commitment to supporting safety in the workplace, and ensures that your radon monitors remain accurate, reliable, and compliant.

For further information contact our office.



Service and Support

Southern Scientific has a team of fully qualified service engineers, who support customers spanning the length and breadth of the UK. We can provide factory or on-site service as required, based on single visits, planned maintenance or full support under contract. We maintain a high level of spare parts, ensuring lifetime support capability.

Our systems group can offer its service for the larger installed equipment, from initial planning to installation, completion and training. We can provide expert knowledge and experience, gained through involvement in a number of large-scale projects throughout the years.

ISO Certified

Southern Scientific Ltd is certified to ISO 9001 and ISO 13485 representing the high level of quality assurance and management that we provide at every stage of the supply process, whether a product is distributed on behalf of our trusted manufacturers or constructed in our UK workshop. This accreditation means that our customers can place an order knowing that the delivered product will be suitable for its intended use, fully compliant with EU legislation and in full working order.

All our products are CE marked.



INVESTORS IN PEOPLE
We invest in people Silver

Visit our website



Download the brochure



Southern Scientific Limited

Scientific House, The Henfield Business Park
Shoreham Road, Henfield, BN5 9SL, UK

E-mail: info@southernscientific.co.uk

Tel: +44 (0)1273 497600

www.southernscientific.co.uk

